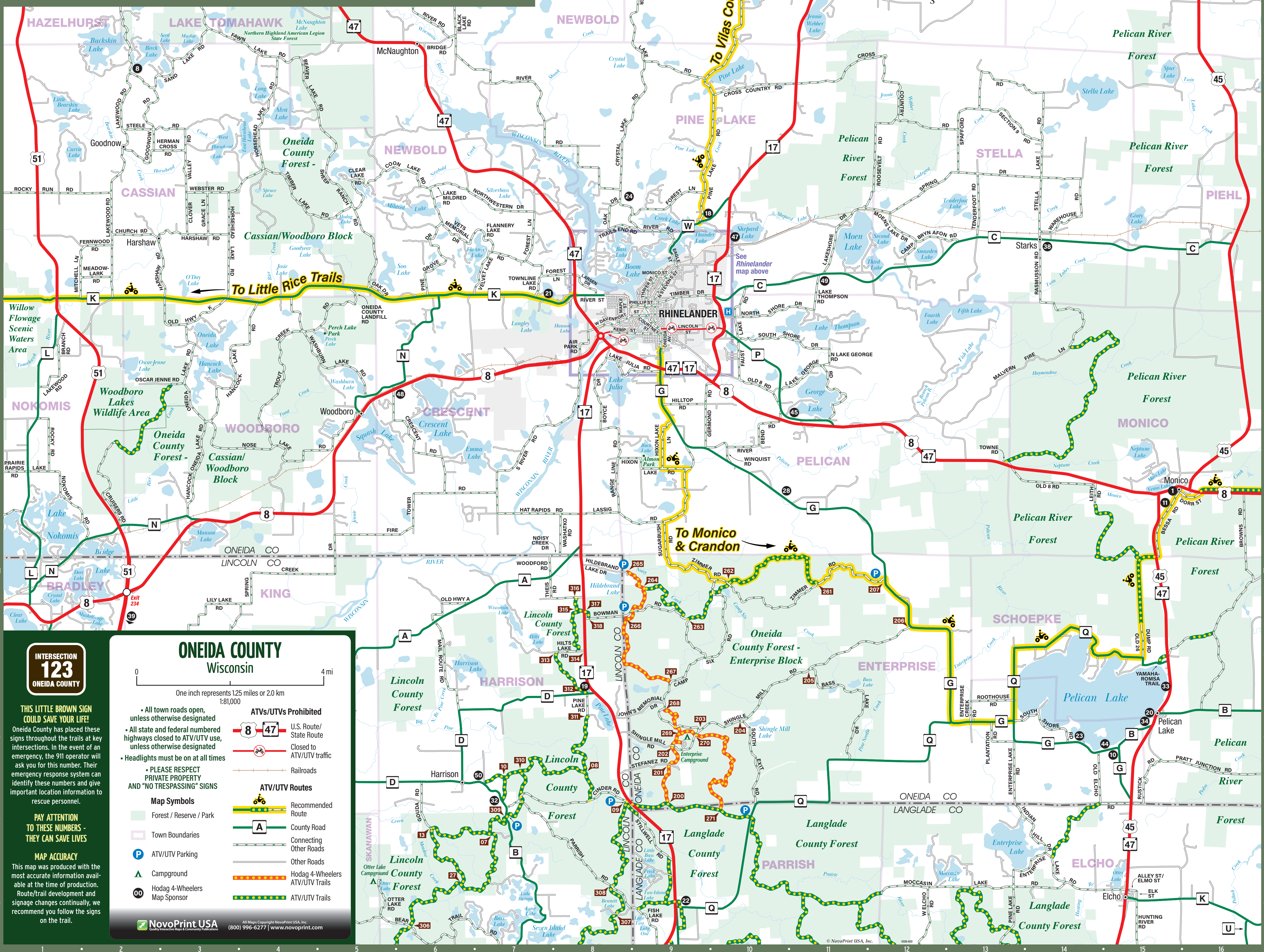


#	ADVERTISER	MAP GRID	#	ADVERTISER	MAP GRID	#	ADVERTISER	MAP GRID
1	AA Bar	O-15	13	Cabaret Cove	B-6	26	Holiday Inn Express & Suites	B-6
2	Aaron's Recreation Repair Services	L-15	14	Catalyst Wine Bar	D-4	27	Jailhouse Saloon Bar and Grill	A-5
3	Aaron's Recreation Repair Services	E-2	15	Comfort Inn	D-6	28	Ken's Country Bar	L-10
4	American by Wyndham Rhinelander	D-2	16	Culver's Restaurant of Rhinelander	D-2	29	Kwik Trip	B-5
5	Auto Gear	B-6	17	Da Bar LLC	D-4	30	Lake Nokomis Cranberries	O-15
6	Auto Value	D-5	18	Da Kozzy Kormer	O-19	31	Nick's Hodag Lanes	B-6
7	Bessey's Meat Market	E-4	19	Derek's Town & Country	N-8	32	Nut-Zee's Resort	P-7
8	Big Daddy's Bar & Grill	D-4	20	Dive on 45	O-15	33	PB & J's Place	N-15
9	Birch Lake Bar & Resort	G-2	21	Fireside Supper Club, The	J-7	34	Pelican Lake Motel	O-15
10	Blind Pig	B-1	22	Fisher's Bar	O-9	35	Pitlik's Sand Beach Resort	B-9
11	Boiling Springs	O-15	23	Gerrit's Lakeview Inn	O-14	36	Precision Powersports	D-4
12	Boondocks, The	L-15	24	Hodag Country Fest	O-18	37	R & T's "Not So" Dinky Diner	E-4
			25	Hodag Honda	B-6	38	Racks n' Rods	O-14
						39	Re/Max Property Pros. - Ben Parsons	N-2
						40	Rhinelander Auto Center	B-6
						41	Rhinelander Chamber of Commerce	D-3
						42	Rhinelander Family Restaurant	E-2
						43	Rhinelander Well Drilling, Inc.	C-1
						44	Roadside Pub	O-15
						45	Rocky's Roadhouse	K-11
						46	Sammy Jr's	O-5
						47	Shoeder's RV & Marine, Inc.	H-10
						48	Town Pump Bar & Grill	K-6
						49	Twin Pines Bar & Grill	O-14
						50	Winding Trail Grill & Bar	P-7



**INTERSECTION 123**  
ONEIDA COUNTY

**THIS LITTLE BROWN SIGN COULD SAVE YOUR LIFE!**  
Oneida County has placed these signs throughout the trails at key intersections. In the event of an emergency, the 911 operator will ask you for this number. Their emergency response system can identify these numbers and give important location information to rescue personnel.

**PAY ATTENTION TO THESE NUMBERS - THEY CAN SAVE LIVES**

**MAP ACCURACY**  
This map was produced with the most accurate information available at the time of production. Route/trail development and signage changes continually, we recommend you follow the signs on the trail.

**ONEIDA COUNTY Wisconsin**

One inch represents 1.25 miles or 2.0 km (1:81,000)

- All town roads open, unless otherwise designated
- All state and federal numbered highways closed to ATV/UTV use, unless otherwise designated
- Headlights must be on at all times
- PLEASE RESPECT PRIVATE PROPERTY AND "NO TRESPASSING" SIGNS

**Map Symbols**

- Forest / Reserve / Park
- Town Boundaries
- ATV/UTV Parking
- Campground
- Hodag 4-Wheelers
- Map Sponsor

**ATVs/UTVs Prohibited**

- 8 47
- Closed to ATV/UTV traffic

**ATV/UTV Routes**

- Recommended Route
- County Road
- Connecting Other Roads
- Other Roads
- Hodag 4-Wheelers ATV/UTV Trails

**NovoPrint USA**  
All Rights Reserved. NovoPrint USA, Inc. (800) 996-6277 | www.novoprint.com